

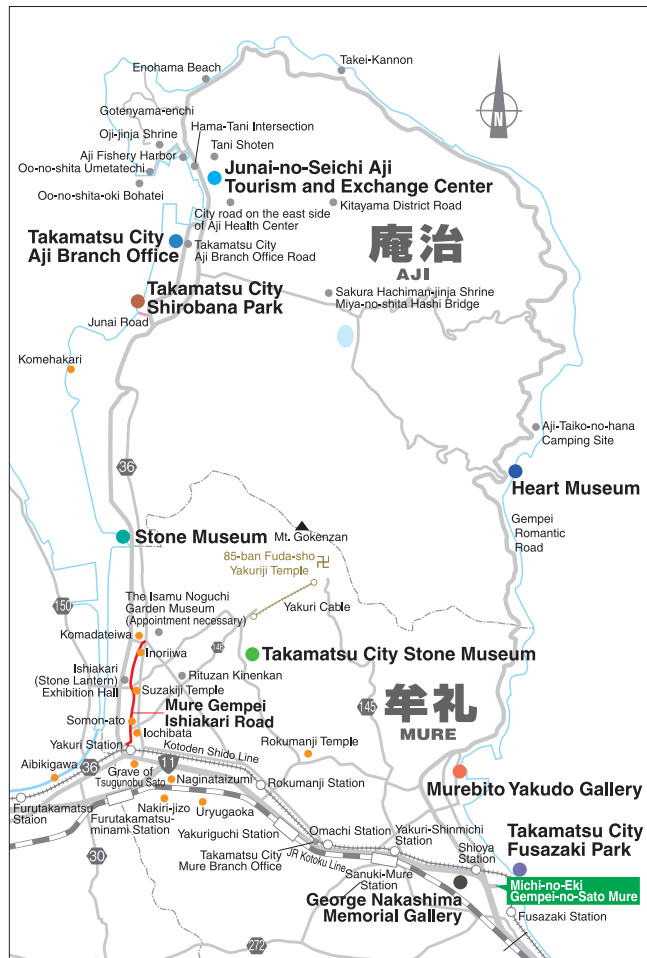
This is a peninsula blessed with mild weather and an abundance of nature on the Seto Inland Sea. Located at the northernmost point of the island of Shikoku, Aji is known for the unique type of granite found here, and the sound of stone being cut can be heard all over. Since ancient times, the quarrying of this high-grade granite known as *Aji-Ishi*, or Aji Stone, gave rise to various trades related to the crafting of stone, and the area became one of the three largest stone-producing areas in Japan.

Aji Stone is one of the three major types of granite found in Japan. Granite is classified into fine-, medium-, and coarse-grained, and the granite found in Aji is either fine or medium. The finer the patterns of grain, the more valuable the stone, and the more lustrous it becomes after polishing. Aji Stone is so beautiful it is considered "the diamond of granite," not discoloring or losing its luster for 200 years. This high quality is recognized internationally.

Aji is also known for its fishing industry. In terms of both volume of catches and production value, the fishing boats of Aji that ply the abundant waters of the Inland Sea are among the most prosperous in the prefecture. These two industries, fishing and stone, are the two main industries that support the town.

The town also has many historical sites that date back to feudal times, including a close-up view of the Yashima plateau, where the last battle of the Gempei War was fought, and the "hidden cove" used by the warships of the Heike Clan.

Recently, the town has become known throughout Japan as the location for a popular film known as *Crying Out Love, In the Center of the World* (*Sekai no Chushin de, Ai wo Sakebu*), and people come from all over Japan to see the area made famous by the movie. The town has many attractions that can be found nowhere else, from the nature that is as equally beautiful as Aji Stone to the highly distinctive local industry. It is an enjoyable place to spend a meaningful time either with family or that special someone in your life.



Junai-no-Seichi Aji Tourism and Exchange Center

5824-4 Aji-cho, Takamatsu City, Kagawa Prefecture 761-0130
Tel./Fax.: 087-871-1700

Takamatsu City Aji Branch Office (facility inquiries)

6393-5 Aji-cho, Takamatsu City, Kagawa Prefecture 761-0187
Tel.: 087-871-3111 Fax.: 087-871-3115
<http://www.city.takamatsu.kagawa.jp/3638.html>

Takamatsu City International Cultural Advancement Section (works of art inquiries)

1-8-15 Ban-cho, Takamatsu City, Kagawa Prefecture 760-8571
Tel.: 087-839-2636 Fax.: 087-839-2015
<http://www.city.takamatsu.kagawa.jp/642.html>

Takamatsu City Shirobana Park (facility inquiries)

6392-91 Shinkai, Aji-cho, Takamatsu City, Kagawa Prefecture 761-0130

Takamatsu City International Cultural Advancement Section (works of art inquiries)

1-8-15 Ban-cho, Takamatsu City, Kagawa Prefecture 760-8571
Tel.: 087-839-2636 Fax.: 087-839-2015
<http://www.city.takamatsu.kagawa.jp/642.html>

Junai-no-Seichi Aji Tourism and Exchange Center

Takamatsu City Aji Branch Office

Takamatsu City Shirobana Park



A place where you can reaffirm your love

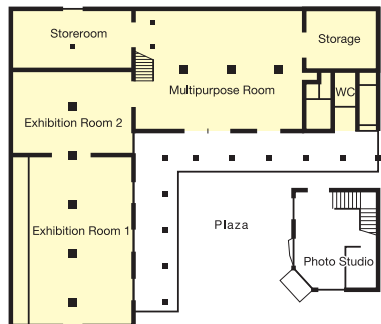
This facility is designed to carry on and promote the local culture of Aji. Works by artists from Aji are on display, along with a restoration of the "Amahira Shashinkan" photography studio, a location set used in the movie *Sekai no Chushin de, Ai wo Sakebu*. The hall also includes a local products market where visitors can purchase souvenirs and local foods. The hall was redesigned and completed in June 2009.



Exhibition and Sales Corner

Café Corner

The building has a shop section where you'll find such goods as local marine products, items produced in Takamatsu's sister city, Tours, France, and ceramics produced by local artists. It is a great spot for buying souvenirs from Aji. There is also an exhibition room showing stone sculptures made using Aji Stone.



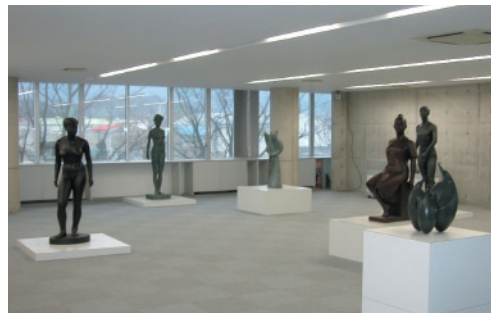
The photo studio "Amahira Shashinkan," a set used in the film, *Sekai no Chushin de, Ai wo Sakebu*, has been restored as a café, and the stone-ground coffee (ground using Aji Stone) is very popular. The café has 28 seats, including counters and tables on the 1st and 2nd floors. On the walls are autographed items from the actors who appeared in the movie, so you can sit and enjoy the atmosphere of the film while relaxing in the café.

A place where you can encounter the culture of Aji

The office was designed by the architect Toru Murakami (winner of a Newcomers' Award at the 47th Geijutsu Sensho) and built in 1996. The unique structure combines the stone for which Aji is known with glass, and offers views of Yashima and Mt. Goken. The space is easy to relax in and feel right at home with and is also popular among local citizens.



On display are 807 works of art by sculptor and painter Sotaro Saegusa, along with 103 works of calligraphy by Fumi Hirose, both of whom hail from Aji. These works of art can be seen in the 2nd floor permanent exhibition area on the southeast side of the offices. Here both local people and visitors can encounter the culture of Aji.



by Sotaro Saegusa



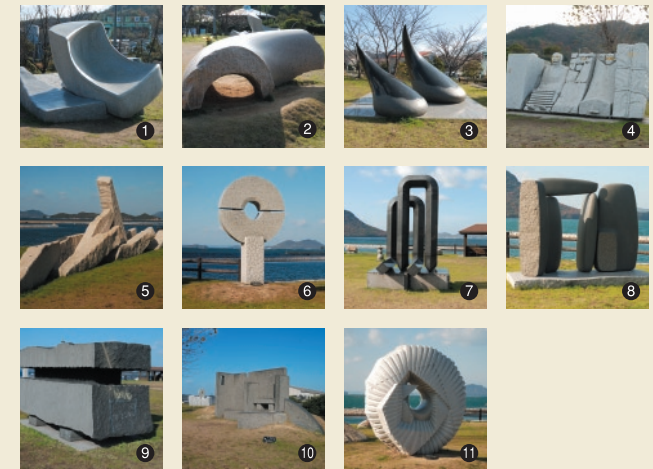
by Fumi Hirose

A popular spot for relaxing and enjoying nature

This seaside park is located right by the placid Seto Inland Sea, and offers a wonderful view of Yashima to the west. A pleasant footpath runs alongside the road leading to the park, known as "Yasuragi no Michi" and inside the park is "Junai (Pure Love) Road," another path symbolizing the romantic place that Aji has become. The park is also filled with stone sculptures, which is becoming for a town known for its granite.



Prize-winning stone sculptures are on display throughout the park. Only here can you experience the beauty of such laboriously crafted works of art set against the expansive background of the Inland Sea. Also on display is an authentic fishing boat that once plied the waters here. It was not only remodeled as a playground toy, but contains an actual helm wheel at which you can sit and "steer" the ship.



- ① Tailwind, Takashi Kondo
- ② Without Being Able to See it All, Masahiro Saji
- ③ At Last Love's Wind Will Blow, Yoshiaki Shibuya
- ④ Facing the Sea, Silence that Wants to Become the Wind, Buemon Suzuki
- ⑤ Miracle Rock from Billions of Years Beneath the Sea, Takehiro Terada
- ⑥ SUN DISC, Robert Sendorf
- ⑦ Hands in Prayer, Masato Ito
- ⑧ Spatial Memory, Toshihiro Takeuchi
- ⑨ Stone Things, Yutaka Miyaji
- ⑩ Lingering Fragrance, Choe Sodong
- ⑪ Solar History No. 3, Kohnsuke Iwasaki